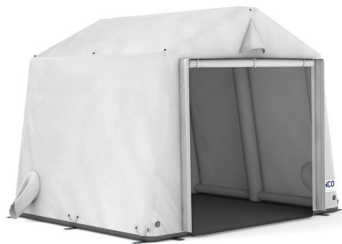




ARZ 10 self-erecting tents with fully inflatable frame

Product Images



Short Description

Quick and easy to (dis)assemble, modular design, multifunctional and interconnectable, ARZ tents are reliable and highly portable. Base areas range from 10 m² to 60 m².

Description

Frame

Completely inflatable frame, made of airtight double-sided PVC coated polyester fabric [850 g/m²], fastened with Velcro closures to the tent skin and floor. Easy replacement of tent skin, floor and frame. The tents can be set up in 1.5 minutes using the compressed air kit. Depending on tent size, assembly takes 2-4 minutes when using an electric blower. A pressure relief valve prevents excessive pressure in the frame.

Tent skin

Tent skin: One-sided PU coated polyester fabric [240 g/m²]; flame retardant, waterproof and mildew resistant design. Tent skin of double-sided PVC coated polyester fabric also available.

PU coated fabric available in 11 different standard colours.

Other colors available on request. Tent skin of double-sided PVC coated polyester fabric [490 g/m²] also available.

Floor

Floor covering of double-sided PVC coated polyester fabric [550 g/m²]. Available with non-slip embossing as option [850 g/m²].

Additional Information

Application area	Civil Defence, Triage, Field Hospitals, First Aid Posts, Military, Decontamination and Hazardous Goods Operations, Police/Gendarmerie, Weatherproof Shelter for Sensitive Equipment and Workshops, United Nations, NGOs/Humanitarian organizations
Base area	10.00 m²
Eaves height	2.30 m
Ridge height	2.76 m
Width	3.40 m
Length	3.20 m
Weight	52.000000