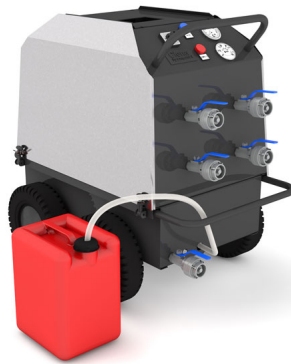




## Hot-Box with integrated dosing feeder

### Product Images

---



### Short Description

---

This compact, mobile boiler was developed for cleaning / decontamination purposes of the action forces in case of incidents with CBRN / hazardous goods.

### Description

---

This compact, mobile boiler was developed for cleaning / decontamination purposes of the action forces in case of incidents with CBRN / hazardous goods.

The unit contains a currentless working proportional dosing feeder which can work with soaps, lyes, alkaline and acidic media, dosing 0.2 – 10%, depending on requirements; pressure resistant up to 9,75 bar. The dosing feeder can be switched on and off easily during operation.

The four water supplies are adjustable from +30°C to 60°C. The two thermal blenders have an integrated protection from scalding. The two water supplies on the left hand side are attached to the dosing feeder; the other two on the right hand side provide warm water without any decontamination products. The temperature on both sides can be adjusted separately.

On the front side you find two temperature indicators for the warm water as well as a pressure gauge for the incoming water. Two operating lights indicate electrical power (green) and breakdown (red). Additional safety is gained with the internal 24V low voltage system. Integrated pressure gauge up to 6 bars. Couplings are either with ¾" GEKA or Storz D, other couplings being available on request.

The high-performance boiler (90kW) can be operated with either diesel fuel or light fuel oil. The unit possesses a flame control system (thermally controlled) which is a requirement for the use indoors with a fume outlet. The integrated tank has a capacity

of 20l of fuel.

The robust construction with two wheel axles allows secure maneuvering in difficult terrain. Four lifting eyebolts allow easy transportation.

Accessories for increased safety:

- Fume outlet (chimney) made of stainless steel with rain protection hood, double-walled and insulated (flame retardant)
- Support for fume outlet (chimney)
- Transport box 120 x 80 x 110 cm, mounted on EUR pallet for secure transport and storage.

Additional Information

Width	570 mm
Water temperature	30°C - 70°C
Frequency	50 Hz
Fuel	diesel
Fuel consumption	7.8 l/h
Height	800 mm
Length	890 mm
Operating pressure	max. 2-10 bar
Plug	IP68
Application area	Civil Defence, Field Hospitals, Military, Decontamination and Hazardous Goods Operations, Weatherproof Shelter for Sensitive Equipment and Workshops, United Nations, NGOs/Humanitarian organizations, Associations & Youth groups – tent camps
Voltage	230 V
Electrical control system	24 V low voltage
Flow rate	max. 50 l/min.
Heater output	ca. 90 kW
Weight	65.000000