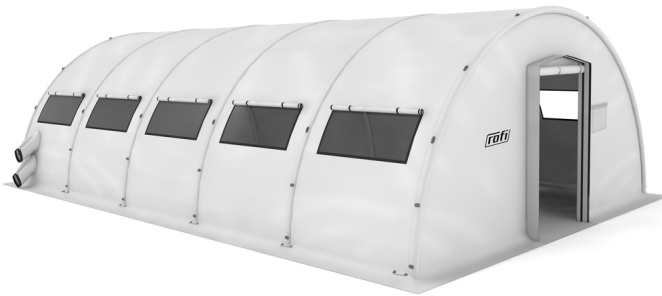




ROFI RAPID 610 Inflatable Tent

Product Images



Short Description

ROFI RAPID 610 tent is a high pressure, medium weight inflatable shelter that requests a simple logistic support to deploy.

Description

ROFI RAPID 610 tent is a high pressure, medium weight inflatable shelter that requests a simple logistic support to deploy. The set up time depends on the power of the inflating compressor.

The RAPID 600 series comes in three different lengths of 6, 8 and 10 meters and a width of 6 meters as standard. They can be connected to each other length- and cross-wise and to other shelters like containers and vehicles, among others.

The tent is equipped with three layer windows allowing natural ventilation, with curtains operated from the outside. Inner liner, RIS (ROFI insulation System) inner liner, for special climatic conditions, partition walls and flysheet are available booth for 2 door and 4 door models. The integrated anti-skid PVC flooring protects against surface water, reptiles or bugs.

Advantages

- High pressure structure - 6-8 bar with overpressure valves on air tubes
- Rapid - 1 or 2 air filling points. 5-30 min setup time depending on the compressor type used
- Simple logistics - packed in standard pallets
- Multiple use - connectable to other ROFI tents and shelters

Application area	Civil Defence, Triage, Field Hospitals, First Aid Posts, Military, Decontamination and Hazardous Goods Operations, Accommodation and Catering, Police/Gendarmerie, United Nations, NGOs/Humanitarian organizations
Base area	60.00 m²
Ridge height	3.00 m
Width	6.00 m
Length	10.00 m
Packing size	200 cm x 80 cm x 115 cm