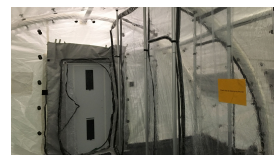
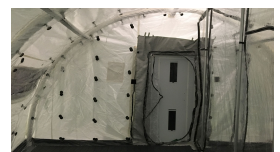




Biological and Chemical Resistant Inner Liner for Negative Pressure Unit

Product Images



Short Description

Biological and chemical resistant inner liner for Negative Pressure Unit

Description

The inner liner is made of transparent biological and chemical resistant fabric. It can be fitted with up to 4 chambers for the individual isolation of patients. The partition walls are removable to create bigger chambers or a complete chamber free inner liner for maximum space.

The inner liner is connected to the Smart door personnel airlock system. Each chamber is provided with an additional airlock for maximum safety.

The inner liner can also be designed to meet customer special needs.

Application area	Civil Defence, Triage, Field Hospitals, First Aid Posts, Military
------------------	---

Additional Information