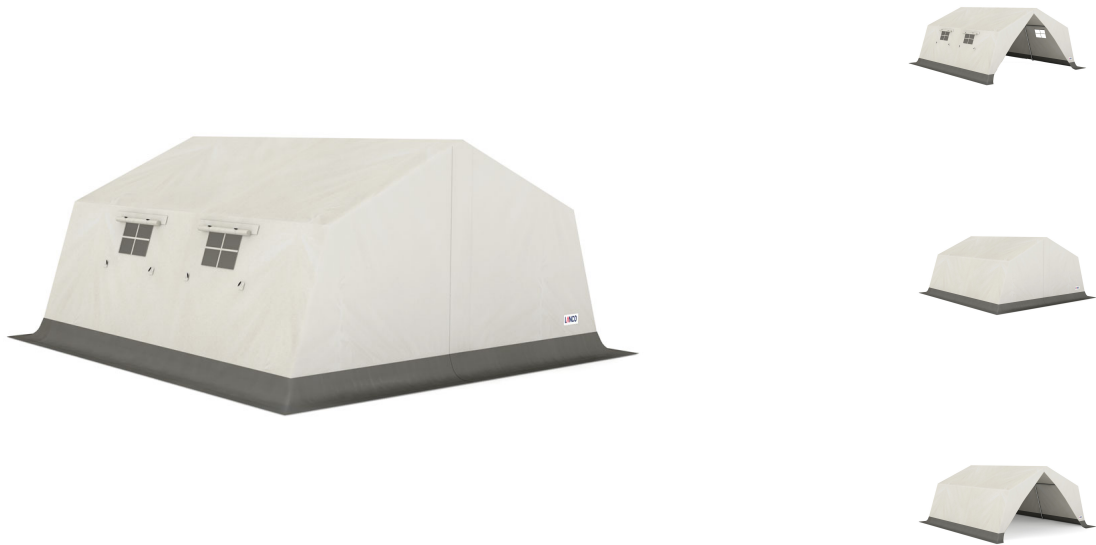




## Medical and Accommodation Aluminum Frame Tents - SG 20

### Product Images

---



### Short Description

---

SG tents come in 14 standard configurations and 10 different areas of applications. No special tools are required for setup, they are modular and easy to interconnect.

### Description

---

#### Standard

Tent with entrance in the front gable (toggle closing), window 60 x 40 cm with exterior shutter in back gable, aluminium frame and accessories.

#### Frame

The frame system consists of anodized aluminium tubes, diameter 40 mm. The connectors and base plates are made of an aluminium alloy.

- Wall thickness of 1.5 mm of the material AL Mg 4,5 Mn.
- Yield strength:  $R_{p0,2} = 330-340 \text{ N/mm}^2$
- Ultimate strength:  $R_m = 350-370 \text{ N/mm}^2$

- Peg, 20 mm diameter, hot-dip galvanised iron with top forged on, 700 g, 300 mm long
- T-peg, galvanised iron, 300 mm long
- Peg with hook, galvanised steel, 300 mm long

### Tent skin

LANCO tents are made of LANCO heavy-duty fabric. LANCO-heavy-duty fabric is permeable to the air, rot-resistant, water pressure proof laminated and is extremely tearproof as well as highly protective against UV-rays.

### Fabric:

Twisted cotton-polyester 50%/50% Yarn

### Options:

- Connecting unit, chimney passage, divisibility with loop closing, canopy, partition walls, roll-up facility of one side or one panel
- Window, tent skin
- Window, inner cabin
- Roll-up facility one panel
- Second entrance

### Additional Information

Application area	Civil Defence, Triage, Field Hospitals, First Aid Posts, Military, Accommodation and Catering, Police/Gendarmerie, Industry and commerce, Weatherproof Shelter for Sensitive Equipment and Workshops, United Nations, NGOs/Humanitarian organizations, Promotion agencies, Party – Event, Associations & Youth groups – tent camps
Base area	23.70 m <sup>2</sup>
Eaves height	1.73 m
Ridge height	2.50 m
Width	4.74 m
Length	5.00 m
Packing size	100 x 70 x 46 cm
Weight	71.000000