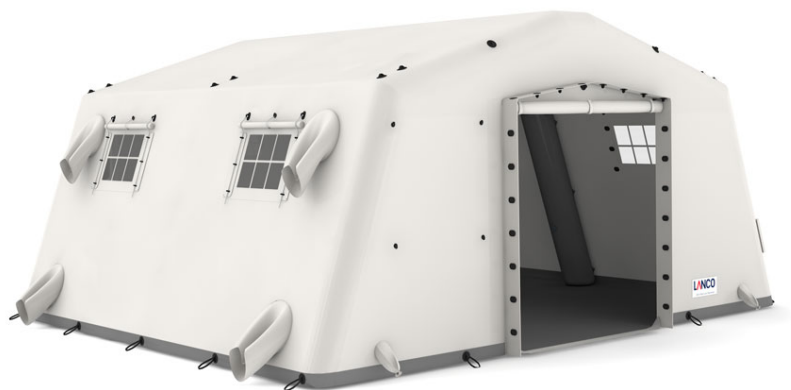




AZF 29 self-erecting tents

Product Images



Short Description

Ready to use within minutes, the AZF series is the ideal solution for all emergency situations. Durable, they can be efficiently deployed on any type of terrain.

Description

Frame

Main beams and ridge beams inflatable, made of airtight double-sided PVC coated polyester fabric [1,100 g/m²], fixed to the cover and floor. Eaves purlins made of aluminium. Easy replacement of cover and frame. The tents can be set up in 4-7 minutes, depending of the tent size. A pressure relief valve prevents excessive pressure in the frame.

Tent skin

Tent skin is made of double-sided PVC coated polyester fabric [750 g/m²]; flame resistant, waterproof and mildew resistant.

Floor

Floor covering of double-sided PVC coated polyester fabric [750 g/m²]. Available with non-slip embossing as option [850 g/m²].
Other colors available on request.

Additional Information

Application area	Civil Defence, Triage, Field Hospitals, First Aid Posts, Military, Decontamination and Hazardous Goods Operations, Police/Gendarmerie, Weatherproof Shelter for Sensitive Equipment and Workshops, United Nations, NGOs/Humanitarian organizations
Base area	29 m²
Eaves height	2.20 m
Ridge height	2.80 m
Width	5.60 m
Length	5.15 m
Packing size	2.05 x 0.45 x 0.45 m
Operating pressure	0.30 bar
Weight	126.000000