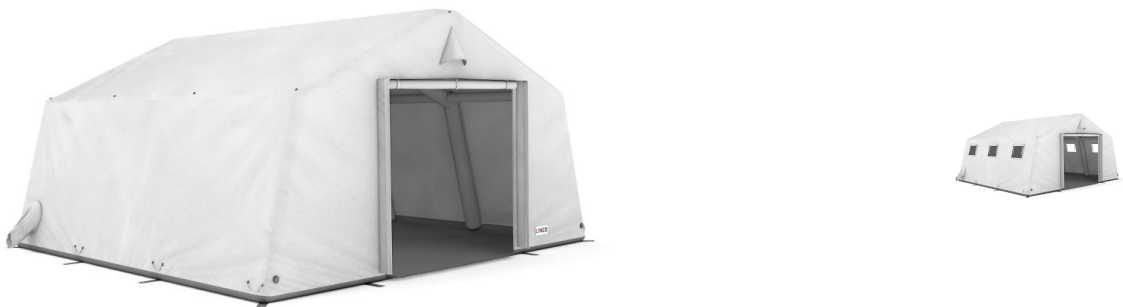




## ARZ 30 self-erecting tents with fully inflatable frame

### Product Images

---



### Short Description

---

Quick and easy to (dis)assemble, modular design, multifunctional and interconnectable, ARZ tents are reliable and highly portable. Base areas range from 10 m<sup>2</sup> to 60 m<sup>2</sup>.

### Description

---

#### Frame

Completely inflatable frame, made of airtight double-sided PVC coated polyester fabric (0.85 kg/m<sup>2</sup>), fastened with Velcro closures to the tent skin and floor. Easy replacement of tent skin, floor and frame. The tents can be set up in 1.5 minutes using the compressed air kit. Depending on tent size, assembly takes 2-4 minutes when using an electric blower. A pressure relief valve prevents excessive pressure in the frame.

#### Tent skin

The tent skin is crafted from a single-sided PU-coated polyester fabric (0.24 kg/m<sup>2</sup>) that's both flame-retardant and waterproof. This design also resists mildew growth for long-lasting use. For applications requiring additional strength, a double-sided PVC-coated polyester fabric tent skin (0.49 kg/m<sup>2</sup>) is also available. 11 standard PU-coated fabric colours are available to suit your needs. We can also accommodate requests for other colours to personalize your space.

## Floor

Floor covering of double-sided PVC-coated polyester fabric (0.55 kg/m<sup>2</sup>). Available with non-slip embossing as an option (0.85 kg/m<sup>2</sup>).

## Additional Information

---

Application area	Civil Defence, Triage, Field Hospitals, First Aid Posts, Military, Decontamination and Hazardous Goods Operations, Police/Gendarmerie, Weatherproof Shelter for Sensitive Equipment and Workshops, United Nations, NGOs/Humanitarian organizations
Base area	31.00 m <sup>2</sup>
Width	5.50 m
Length	5.72 m
Eaves height	2.00 m
Ridge height	2.95 m
Operating pressure	0.25 bar
Packing size	113 x 75 x 65 cm
Weight	103.00 kg